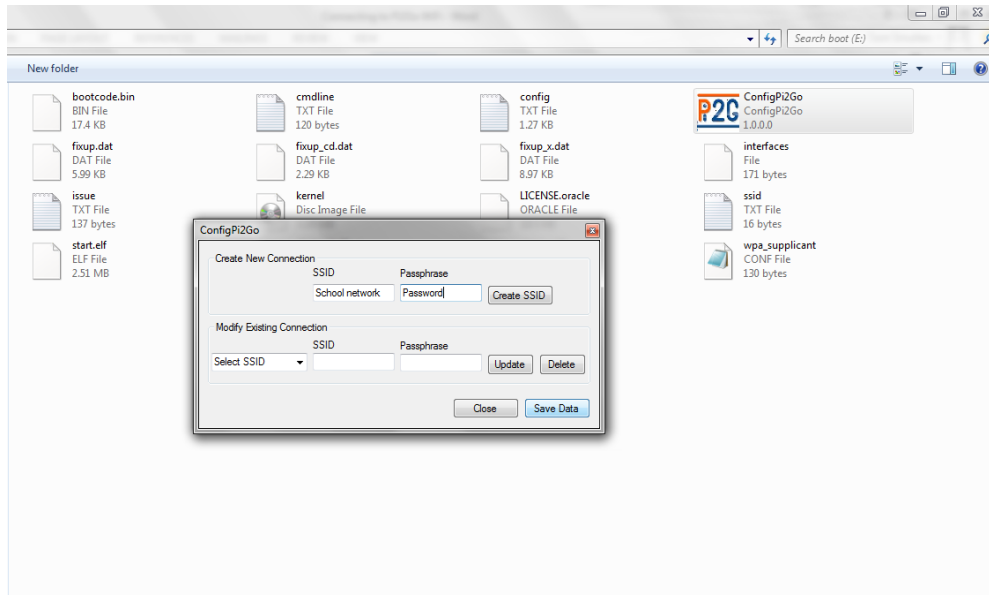


Connecting to Pi2Go via WiFi

Configuring Pi2Go to connect to school network

- Insert SD card into PC
- Open the SD Card folder called “Boot”
- Open the file named “ConfigPi2Go”



Input the name of the wireless network you want to connect to in “SSID” and enter the password for the wireless network into “Passphrase”. Once this has been populated click “Create SSID” followed by “Save Data”.

Connecting to Pi2Go through a VNC viewer

- Insert SD card into Pi2Go.
- Turn on Pi2Go
- Open your VNC viewer and await Pi2Go to broadcast an IP address on its IP address display. This will usually take the form of “192.168.XX.XX”.
- Once you have the IP address, input it to the VNC viewer and click “Connect”. This will then establish a direct connection to the Raspberry Pi enabling you to remote control it. (The VNC viewer below is TightVNC. There are other VNC viewers available.)

